

What is a Watershed?

A watershed is the area of land that drains into a common body of water.

This includes:

- precipitation
- streams
- and other water sources



The Cass River Watershed

Area:

908 miles²

River and Stream Miles:

1352 miles

Elevation above sea level:

850 feet in Huron to 580 feet in Saginaw



The Cass River Watershed

Located in the Lower Peninsula's thumb region

In 6 counties:

Genesee, Huron, Lapeer, Saginaw, Sanilac, Tuscola

Communities included:

Bridgeport, Caro, Cass City, Frankenmuth, Marlette,
Millington, Tuscola, Vassar, and Ubly

The Cass River Watershed Cont.

Main Economy:

Agriculture

Forestry

Tourism

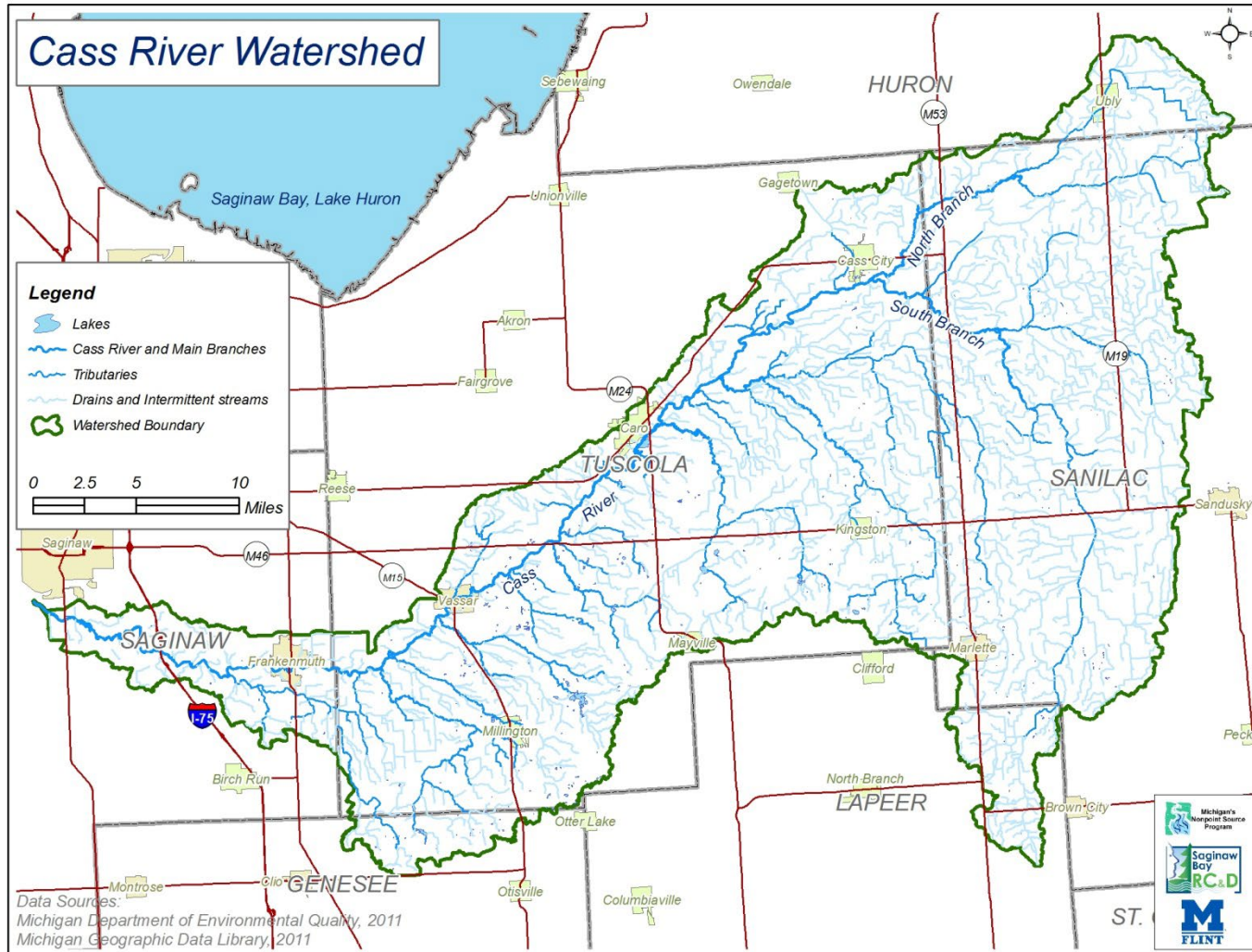
Land Use:

Agriculture uses 57%

Forestry uses 19%



Cass River Watershed – Location



What is a Watershed Plan?

A watershed plan brings together members of the community to manage land activities that affect water.



What is a Watershed Plan?

It recommends ways to protect and improve water resources as land use changes.



Because water runs over land, land use has the potential to add pollutants to our water resources.

Why a Watershed Plan?

Watershed Management Plans:

- manage activities related to water quality
- address water quality concerns cost effectively
- receive government funding to aid in implementation
- gets the community aware and involved





Key parts of a watershed plan?

1. Watershed Inventory
2. Building local partners network
3. Raising awareness
4. Developing an action plan



Watershed Planning Project Goals

1. Involving key stakeholders to...



...identify local priorities and concerns focusing on improving water quality.



Watershed Planning Project Goals

Cont.

2. Evaluate and summarize watershed information to locate and prioritize areas for water quality improvement.

Tasks include:

- Hydrologic assessment

- Evaluation of land ordinances and policies

- Wetland restoration map

- Potential conservation areas assessment

- Pointed on-the-ground visual stream assessments

Watershed Planning Project Goals Cont.

3. Watershed Management Plan for the Cass River Watershed that meets Federal and State criteria to gain funding for future projects to improve water quality.



Contact Us at...

Saginaw Bay RC&D:

(989) 684-5650 or
cassrivertech@gmail.com

U of M-Flint, Outreach:

(810) 424-5489 or
smcdonne@umflint.edu

Spicer Group:

(989) 754-4717 or at their website,
www.spicergroup.com/

Tuscola Conservation District:

(989) 673-8174 ext. 3 or
jim.kratz@mi.nacdnet.net

Saginaw Conservation District:

(989) 239-1926 or
patti.copes@mi.nacdnet.net

Sanilac Conservation District:

(810) 648-2116 ext. 4 or
sandy.pritchett@mi.nacdnet.net
or
www.sanilacounty.net/PublicPages/Entity.aspx?ID=194